



Elevate

Carpet Tiles

Product Detail

Product	Elevate Carpet Tile
Application	Floor
Material	100% solution dyed nylon
Style	Tufted loop pile
Pile Weight Tile	470 gsm
Dimensions	500 x 500mm
Thickness Tiles	7mm
per box	20

Guarantees

Wear Warranty	20 years*
Castor Chair Proof	20 years*
Anti-Static	Lifetime*
Colorfast	20 years*
Classification	Commercial Extra Heavy Duty

*conditions apply



QuickShip available

Technical Data

Dimensional Stability	ISO 17984, -0.05%
Electrostatic Propensity	AATCC 134 \leq 1000V
Light Fastness	ISO 105-B02, 6-7
Thermal Resistance	0.43m ² K/W
Fire Test Method	AS/ISO 9239.1-2003
Critical Heat Flux	Mean result 7.5kW/m ²
Smoke Deviation Rate	Mean result 239%.min
Fire Test Method	ASTM E648 Class 1
Critical Heat Flux	Average, 0.79 kW/m ²

Sustainability



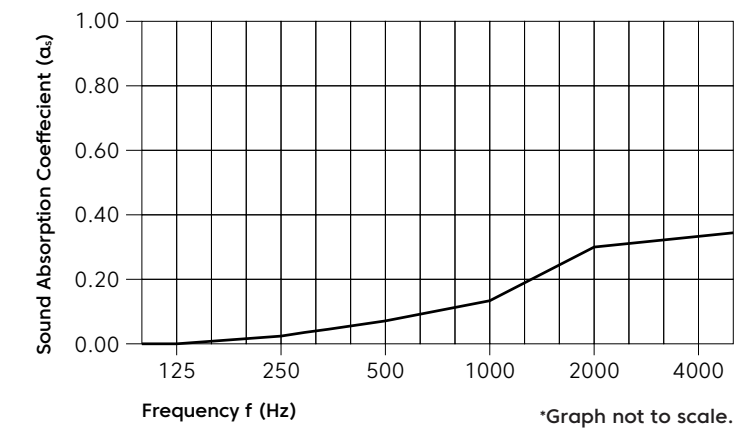
BarrierBack 100% recycled nylon face pile layer



ECONYL®

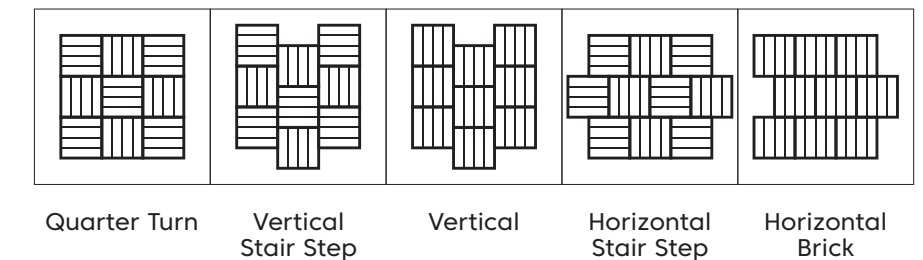
Acoustic Performance

Sound Absorption AS ISO 354, NRC 0.15



Frequency (Hz)	125	250	500	1000	2000	4000	NRC
α_s	0.00	0.03	0.07	0.16	0.30	0.36	0.15

Installation Method



Quarter Turn

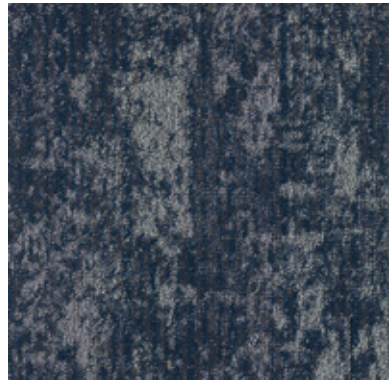
Vertical Stair Step

Vertical

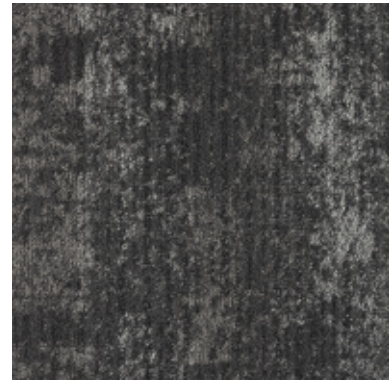
Horizontal Stair Step

Horizontal Brick

Colorways



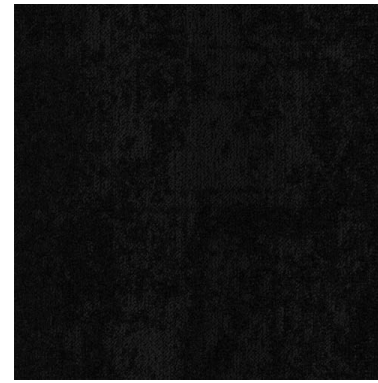
Ocean Foam



Hinterland



Summit



Cavern